

# HAPP INDUSTRIAL

A DIVISION OF SUZO-HAPP GROUP



## PUSHBUTTONS





# ILLUMINATED PUSHBUTTONS

## SHIPPED STANDARD WITH A 14V #161 LAMP

See Back Page for optional LEDs, Pushbutton Covers, and other accessories.

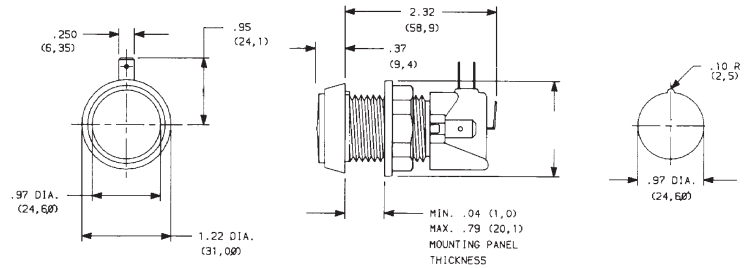
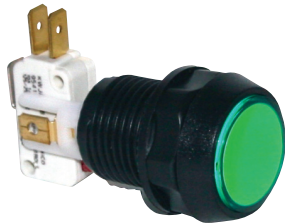
- Made with highest quality materials
- Exclusive "Twist-Type" design assures secure fit
- Fits wood or metal control panels
- Polycarbonate lens cap for optical clarity
- Heat resistant plastic
- Microswitch reliability tested to 10,000,000 cycles
- Custom legend lettering designs and artwork available at nominal charge
- Can be used as Indicator Light
- Custom bezel colors available
- LED options available upon request - see back page
- Current Rating: 10amps @ 120VAC, 10amps @ 28VDC

LEGEND & LENS CAP  
X = COLOR

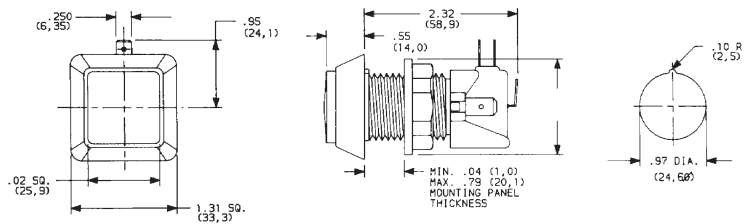
	RED	= 0
	WHITE	= 1
	BLUE	= 2
	GREEN	= 3
	YELLOW	= 5
	AMBER	= 7

\* For Representation Only  
Actual Colors May Vary

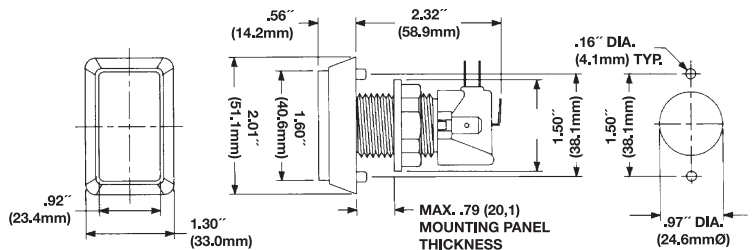
### SMALL ROUND D54-0004-2X



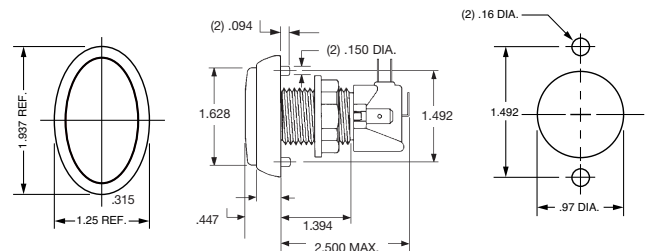
### SMALL SQUARE D54-0004-4X



### RECTANGLE D54-0004-5X



### ELLIPTICAL 75-6004-8X



# ILLUMINATED PUSHBUTTONS

SHIPPED STANDARD WITH A 14V #161 LAMP

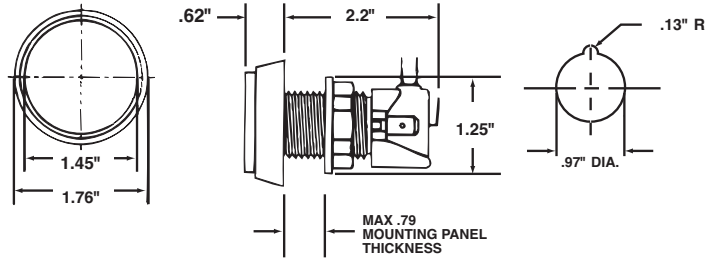
See Back Page for optional LEDs, Pushbutton Covers, and other accessories.

- Made with highest quality materials
- Exclusive "Twist-Type" design assures secure fit
- Fits wood or metal control panels
- Polycarbonate lens cap for optical clarity
- Heat resistant plastic
- Microswitch reliability tested to 10,000,000 cycles
- Custom legend lettering designs and artwork available at nominal charge
- Can be used as Indicator Light
- Custom bezel colors available
- LED options available upon request - see back page
- Current Rating: 10amps @ 120VAC, 10amps @ 28VDC

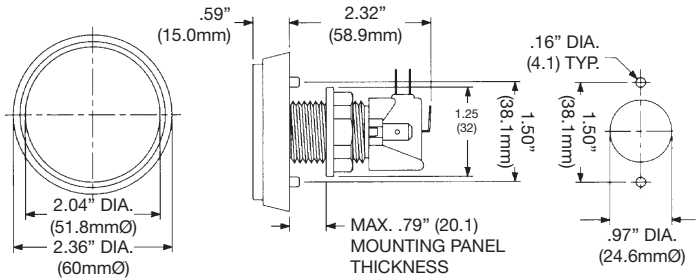
LEGEND & LENS CAP		
X = COLOR		
	RED	= 0
	WHITE	= 1
	BLUE	= 2
	GREEN	= 3
	YELLOW	= 5
	AMBER	= 7

\* For Representation Only  
Actual Colors May Vary

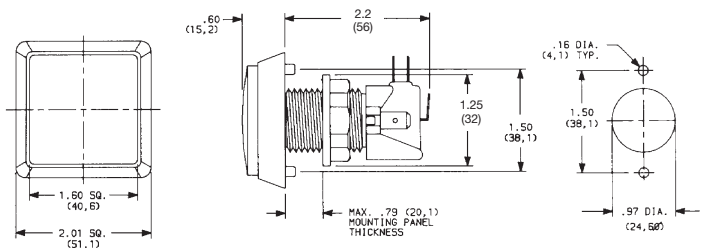
## MEDIUM ROUND D54-0004-6X



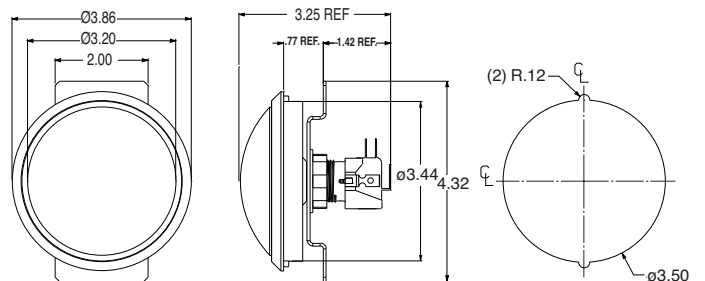
## LARGE ROUND D54-0004-1X



## LARGE SQUARE D54-0004-3X



## JUMBO ROUND 95-4002-1XZL



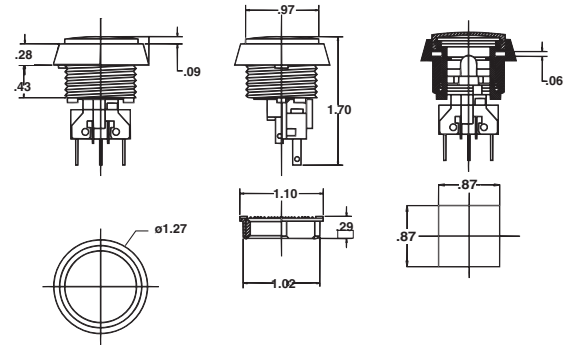
# COMBO ILLUMINATED PUSHBUTTONS

## SHIPPED STANDARD WITH A 14V #73 LAMP

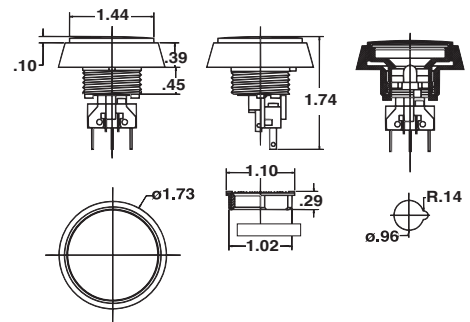
See Back Page for optional LEDs, Pushbutton Covers, and other accessories.

- Standard illuminated pushbutton fitted with a subminiature switch with gold contacts and .110 terminals
- Subminiature switch allows more room under control panel
- High reliability and long life, tested to 10,000,000 cycles
- Fitted standard with #73, 14V wedge based lamp
- Fits wood or metal control panels
- Custom legend lettering designs and artwork available at nominal charge
- Twist-Type lampholder
- Can be used as Indicator Light
- Custom bezel colors available
- LED options available upon request - see back page
- Current Rating: 1amp @ 120VAC

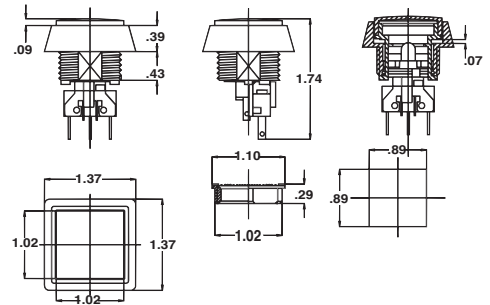
### SMALL ROUND 75V-0004-2X



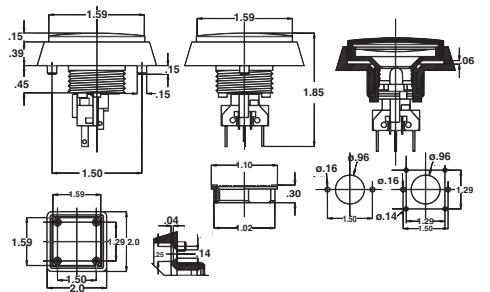
### MEDIUM ROUND 75V-0004-6X



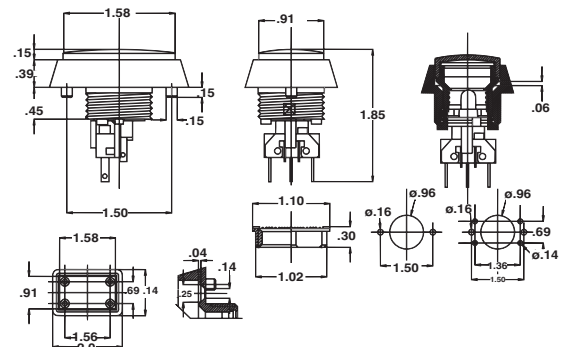
### SMALL SQUARE 75V-0004-4X



### LARGE SQUARE 75V-0004-3X



### RECTANGLE 75V-0004-5X



#### LEGEND & LENS CAP X = COLOR

	RED	= 0
	WHITE	= 1
	BLUE	= 2
	GREEN	= 3
	YELLOW	= 5
	AMBER	= 7

\* For Representation Only  
Actual Colors May Vary

CONTACT YOUR SALES REPRESENTATIVE FOR PRICING AND INFORMATION  
TOLL FREE PHONE: (888) 289-4277

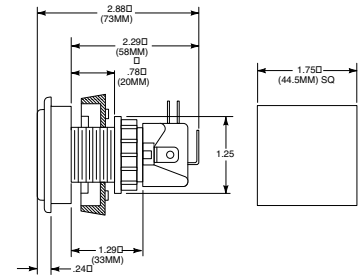
# LOW PROFILE ILLUMINATED PUSHBUTTONS

## SHIPPED STANDARD WITH A 14V #161 LAMP

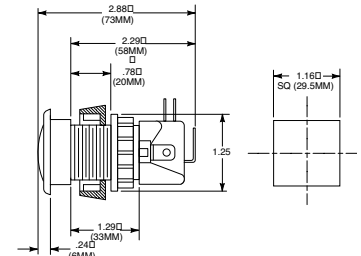
See Back Page for optional LEDs, Pushbutton Covers, and other accessories.

- Unique design provides "flat" profile
- Fits wood or metal control panels
- Microswitch reliability tested to 10,000,000 cycles
- Fitted standard with #161, 14V bulb
- Exclusive "Posi-Lock" design assures secure fit
- Custom legend lettering designs and artwork available at nominal charge
- Can be used as Indicator Light
- Custom bezel colors available
- LED options available upon request - see back page
- Current Rating: 10amps @ 120VAC, 10amps @ 28VDC

### LARGE SQUARE 57-0004-3X

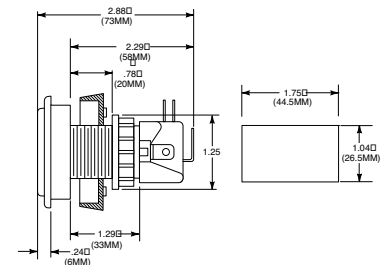
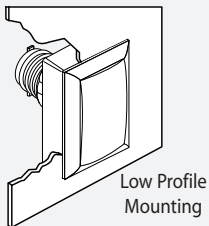


### SMALL SQUARE 57-0004-4X



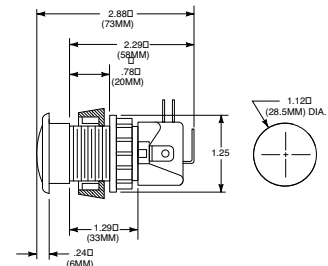
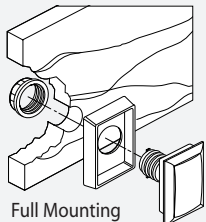
### LOW PROFILE MOUNTING OPTIONS

### RECTANGLE 57-0004-5X

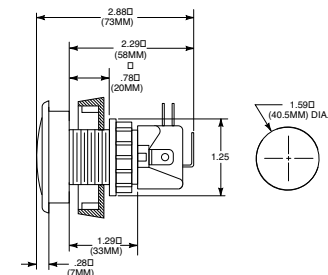
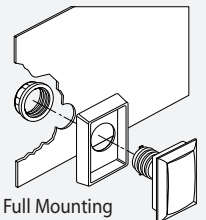


### SMALL ROUND 77-0004-2X

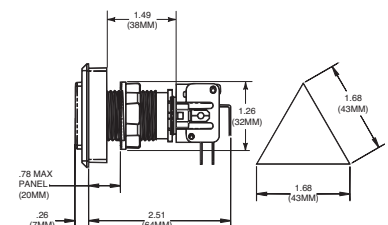
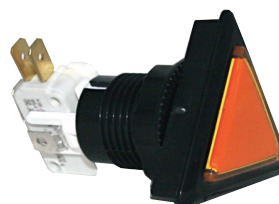
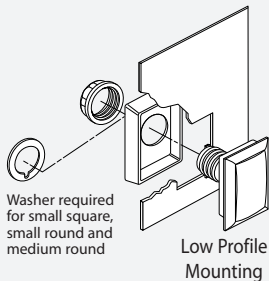
- Twist-Type lampholder



### MEDIUM ROUND 57-0004-6X



### TRIANGLE 71-0004-TX



See previous page for color legend

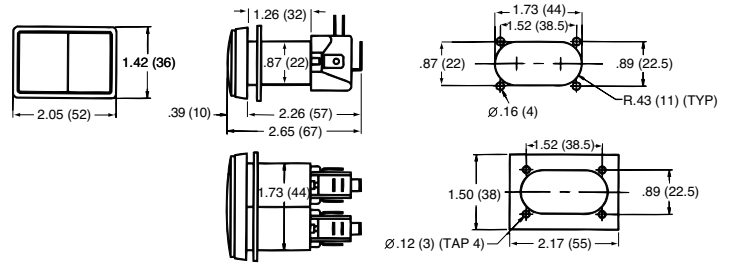
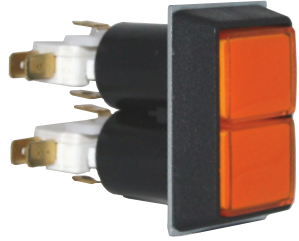
# DUAL ILLUMINATED PUSHBUTTONS

## SHIPPED STANDARD WITH A 14V T-3-1/4 #161 LAMP

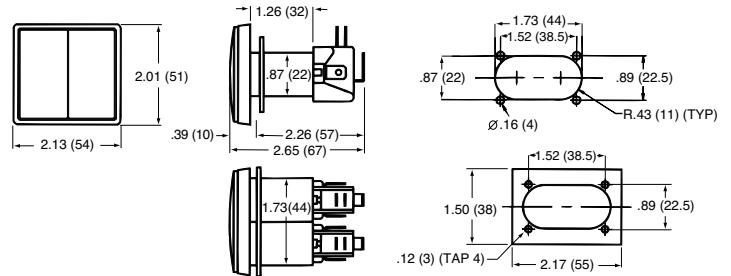
See Back Page for optional LEDs, Pushbutton Covers, and other accessories.

- Provides dual function capability in limited space
- Fits wood or metal control panels
- Microswitch reliability tested to 10,000,000 cycles
- Fitted as standard with T-31/4 incandescent #161 14v DC bulb
- Exclusive "Posi-Lock" design assures secure fit
- Custom legend lettering designs and artwork available at nominal charge
- Can be used as Indicator Light
- Custom Configuration Colors available to suit your needs
- Custom bezel colors available
- LED options available upon request - see back page
- Current Rating: 10amps @ 120VAC, 10amps @ 28VDC

### DUAL RECTANGLE 54-0004-D5XY



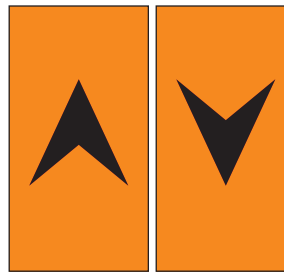
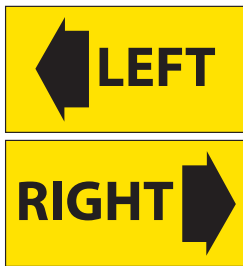
### DUAL LARGE SQUARE 54-0004-D3XY



LEGEND & LENS CAP	
X = COLOR	
	RED = 0
	WHITE = 1
	BLUE = 2
	GREEN = 3
	YELLOW = 5
	AMBER = 7

\* For Representation Only  
Actual Colors May Vary

## CUSTOM LEGEND LETTERING DESIGNS & ARTWORK AVAILABLE



EXAMPLES ONLY



# PUSHBUTTONS WITH MICROSWITCHES

## HORIZONTAL AND VERTICAL MICROSWITCHES & ACCESSORIES

- Horizontal and Vertical Microswitch Pushbuttons Fit a variety of wood or metal control panels up to 3/4"
- Microswitch reliability tested to 10,000,000 cycle
- .187" Terminal Microswitch
- GOLD contact microswitch available
- Durable 100% NYLON material
- Pushbuttons mount in 1-1/8" hole
- Concave plunger design
- Protective cover also available
- Custom bezel colors available
- Current Rating: 10amps @ 120VAC, 10amps @ 28VDC

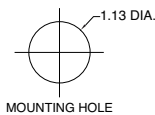
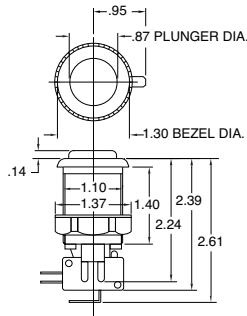
### HORIZONTAL MICROSWITCH CONVEX PUSHBUTTONS 58-96XX-L



### HORIZONTAL MICROSWITCH CONCAVE PUSHBUTTONS 58-91XX-L

LEGEND & LENS CAP	
X = COLOR	
<span style="color: red;">■</span>	RED = 00
<span style="color: white;">■</span>	WHITE = 11
<span style="color: blue;">■</span>	BLUE = 22
<span style="color: green;">■</span>	GREEN = 33
<span style="color: yellow;">■</span>	YELLOW = 55
<span style="color: black;">■</span>	BLACK = 66

\* For Representation Only  
Actual Colors May Vary

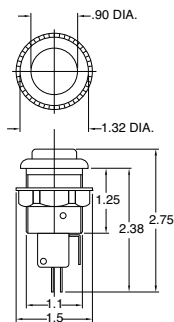


### VERTICAL MICROSWITCH CONCAVE PUSHBUTTONS 53-9200-XX

- Sideways switch actuation – fast and responsive
- Microswitch is held firmly in place via exclusive one screw design

LEGEND & LENS CAP	
X = COLOR	
<span style="color: red;">■</span>	RED = 10
<span style="color: white;">■</span>	WHITE = 11
<span style="color: blue;">■</span>	BLUE = 12
<span style="color: green;">■</span>	GREEN = 13
<span style="color: yellow;">■</span>	YELLOW = 15
<span style="color: black;">■</span>	BLACK = 16

\* For Representation Only  
Actual Colors May Vary



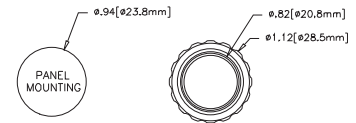
### SHALLOW MOUNTING MICROSWITCH PUSHBUTTONS 60-1200-XX

- Small pushbutton with shallow mounting depth
- .110 Quick Connect Terminals
- Momentary contact switch
- Switch Life: 1,000,000 Cycles
- Current Rating: 12VDC 0.1A, 5V 10mA



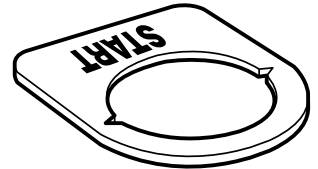
LEGEND & LENS CAP	
X = COLOR	
<span style="color: red;">■</span>	RED = 10
<span style="color: white;">■</span>	WHITE = 11
<span style="color: blue;">■</span>	BLUE = 12
<span style="color: green;">■</span>	GREEN = 13
<span style="color: yellow;">■</span>	YELLOW = 15
<span style="color: black;">■</span>	BLACK = 16

\* For Representation Only  
Actual Colors May Vary



### IDENTIFICATION TAGS 95-4009-00

- For use on all control panels
- Clear polycarbonate plastic
- Optional custom plates available



### BUTTON PLUGS 52-6212-00

- For use on both wood and metal control panels
- Fills in unused button holes
- Comes with nut
- Button plug fits a 1- 1/8" (1.125") hole, for horizontal and vertical pushbuttons



### PROTECTIVE COVER 54-1006-00

- For Horizontal and Vertical Microswitch Pushbuttons
- Protects against spills and scratches
- Duraflex Polyurethane Film

# ILLUMINATED PUSHBUTTON OPTIONS AND ACCESSORIES

## ILLUMINATED PUSHBUTTON WRENCH 53-8002-00

- Dual purpose... one end suitable for illuminated pushbuttons, other end is for pushbuttons with microswitch (Ultimate Pushbutton and with Horizontal Microswitch Pushbuttons)



## T 1-3/4 AND T 3-1/4 WEDGE BASE LED

- Save time and money by replacing your lamps with LEDs
- LEDs are maintenance free, lasting an average of 100,000 hours
- LEDs can reduce power consumption up to 80%
- Great for use on illuminated pushbuttons
- Replace standard T 1-3/4 and T 3-1/4 wedge base lamps
- T 1-3/4 will also fit T 1-1/2 bases
- Designed to be drop-in replacements
- Direct replacements for 73, 86, 161, 194, 259 bulbs
- LEDs are equipped with a resistor



### T 1-3/4 Base

Part Number	Color	LED Type	Volts	Lamp
91-5WB-61W2	White	Single (1)	6 vdc	#86
91-5WB-61Y2	Yellow	Single (1)	6 vdc	#86
91-5WB-61R2	Red	Single (1)	6 vdc	#86
91-5WB-61G2	Green	Single (1)	6 vdc	#86
91-5WB-61B2	Blue	Single (1)	6 vdc	#86
91-5WB-121W2	White	Single (1)	12 vdc	#73
91-5WB-121Y2	Yellow	Single (1)	12 vdc	#73
91-5WB-121R2	Red	Single (1)	12 vdc	#73
91-5WB-121G2	Green	Single (1)	12 vdc	#73
91-5WB-121B2	Blue	Single (1)	12 vdc	#73

### T 3-1/4 Base

Part Number	Color	LED Type	Volts	Lamp
91-10WB-53W	White	Cluster (3)	6 vdc	#259
91-10WB-53B	Blue	Cluster (3)	6 vdc	#259
91-10WB-123W	White	Cluster (3)	12 vdc	#161, #194
91-10WB-123Y	Yellow	Cluster (3)	12 vdc	#161, #194
91-10WB-123R	Red	Cluster (3)	12 vdc	#161, #194
91-10WB-123G	Green	Cluster (3)	12 vdc	#161, #194
91-10WB-123B	Blue	Cluster (3)	12 vdc	#161, #194

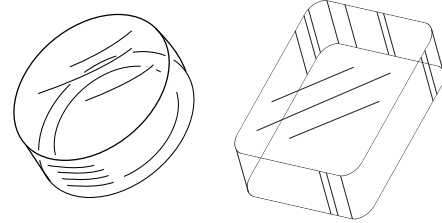
## BUTTON PLUGS 52-6214-00

- For use on both wood and metal control panels
- Fills in unused button holes
- Comes with nut
- Custom bezel colors available
- IPB plug fits a 31/32" (.97") hole, for illuminated pushbuttons



## ILLUMINATED PUSHBUTTON COVERS

- Protects against spills and scratches
- Duraflex Polyurethane Film



### Part Number

54-1001-00	Pushbutton Covers (Small Round)
54-1004-00	Pushbutton Covers (Small Square)
54-1005-00	Pushbutton Covers (Rectangle)
54-1003-00	Pushbutton Covers (Large Round)
54-1000-00	Pushbutton Covers (Large Square)
54-1002-00	Pushbutton Covers (Medium Round)

## MORE AVAILABLE OPTIONS

- Sealed Waterproof Switches
- Various Switch Ratings
- Wire Harnessing
- Custom Panels to Your Specific Design



Corporate Headquarters  
1743 Linneman Road  
Mount Prospect, IL 60056

Las Vegas  
2015 Helm Drive  
Las Vegas, NV 89119

Toll Free Phone (888)289-4277  
Toll Free Fax (800)593-4277