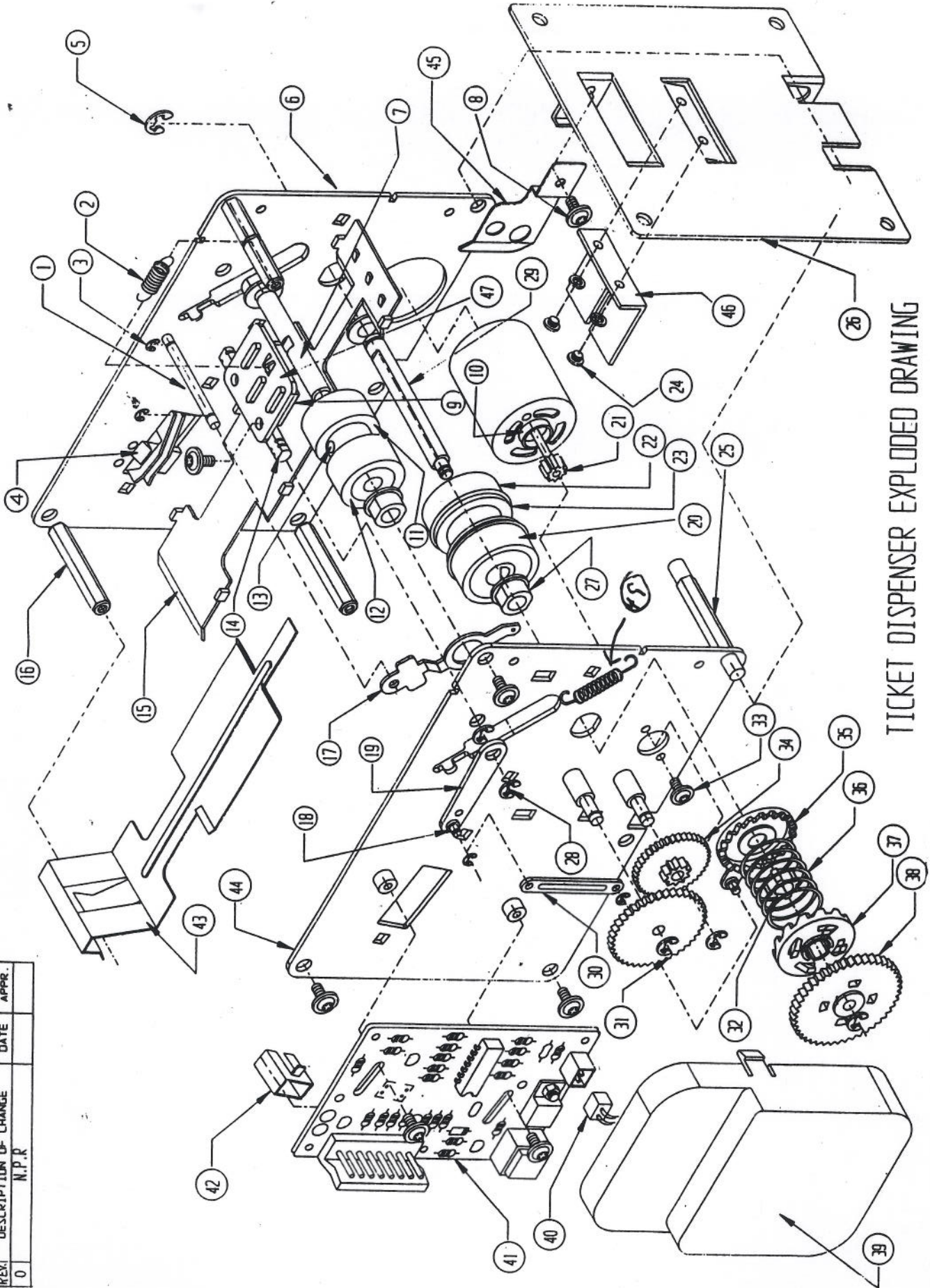



REV.	DESCRIPTION OF CHANGE	DATE	APPR.
0	N.P.R.		



TICKET DISPENSER EXPLODED DRAWING

# TD-963CR/PR

NO.	PART NO.	DESCRIPTION	QTY.	NO.	PART NO.	DESCRIPTION	QTY.
1	104-4011-00	PULL BACK BAR	1	31	101-1015-00	GEAR-12T, 40T	1
2	110-0005-00	STOPPER SPRING	1	32	101-1012-00	CLUTCH SLEEVE	1
3	106-6011-00	2mm E-RING	2	33	106-6002-00	M2.6X0.45+5PS-NI	2
4	101-1005-00	ADJUSTER BLOCK	1	34	101-1014-00	GEAR-1 10T, 39T	1
5	106-6003-00	4mm E-RING	1	35	101-1011-00	BRAKE ACTION PLATE	1
6	102-2039-00	R-SIDE BRKT.	1	36	110-0006-00	CLUTCH SPRING	1
7	104-4013-00	IDLE SHAFT	1	37	101-1010-00	CLUTCH	1
8	106-6005-00	M3X0.5+6C-N1	16	38	101-1013-00	MAIN GEAR 46T	1
9	108-8001-00	STOP RUBBER 1/2" X 1"	1	39	101-1016-00	GEAR COVER	1
10	212-2002-00	DL MOTOR 12V	1	40	214-4001-00	MOTOR LEAD WIRE	1
11	104-4004-01	IDLE ROLLER	1	41	200-963C-00	P.C. BOARD A'SSY (CONTINUOUS)	1
12	104-4004-03	IDLE ROLLER RUBBER	2	42	101-1007-00	OPTO SW. COVER	1
13	106-6001-00	M4X5 HEX SCREW	1	43	102-2034-00	TICKET GUIDE(UP)	1
14	104-4015-00	STOPPER SHAFT	1	44	102-2040-00	L-SIDE BRKT.	1
15	102-2041-00	TICKET GUIDE (BOTTOM)	1	45	102-2045-00	HOLD BLADE	1
16	104-4006-00	HEX POST	4	46	102-2035-00	TICKET GUIDE (FRONT)	1
17	102-2007-00	ROLLER SLIDE BRACKET	2	47	102-2038-00	STOPPER	1
18	104-4009-00	STUD	1	48	200-963P-00	P.C. BOARD ASSY. (PULSE)	1
19	102-2036-00	LEVER ARM	1	49	<del>110-0001-00</del>	<i>ACTION SPRING</i>	
20	101-1017-00	ROLLER (OUTER)	2	50			
21	104-4014	MOTOR PINION 10T	1	51			
22	102-2042	ROLLER RATCH	2	52			
23	101-1018	ROLLER (INNER)	2	53			
24	27-1008	#6-32 SCREW	2	54			
25	104-4017-00	ROTATION SHAFT	1				
26	102-2044-00	FACE PLATE 	1				
27	105-5001-00	SHAFT BUSHING	4				
28	106-6019-00	3mm E-RING	6				
29	104-4012-00	MAIN SHAFT	1				
30	102-2037-00	LINK	1				